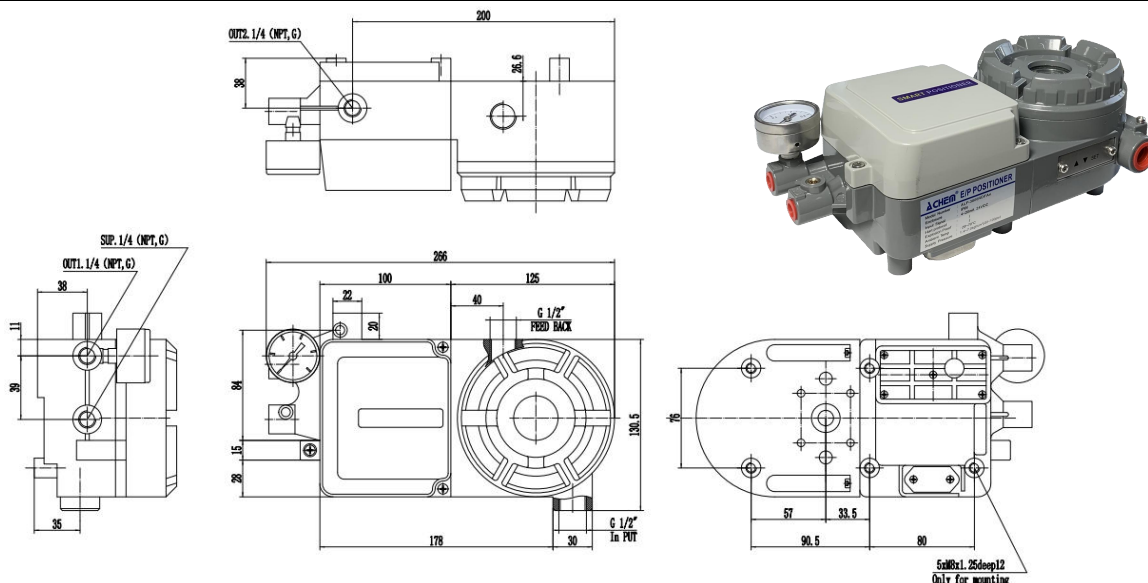
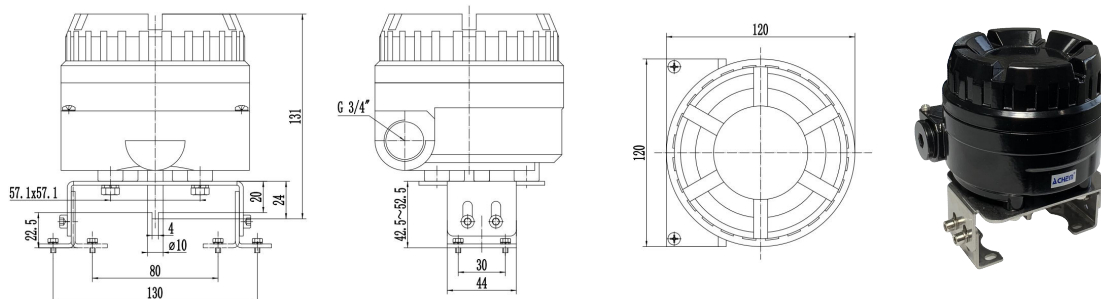


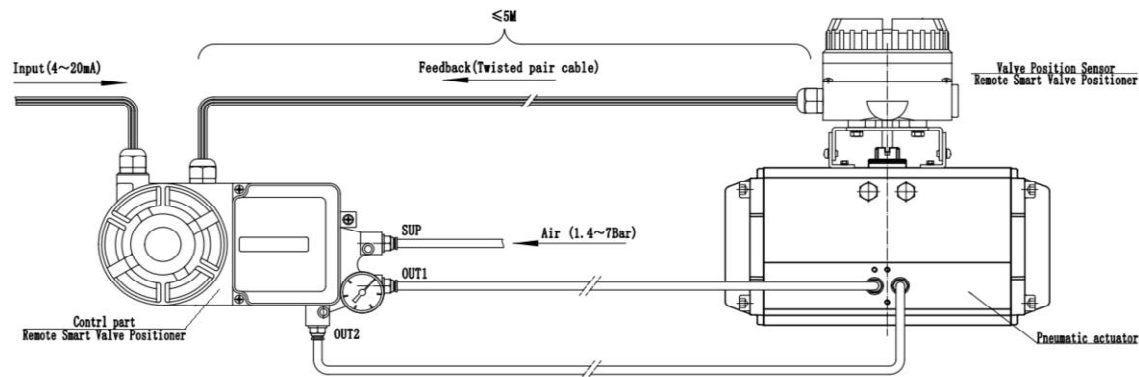
Dimension of the control unit of the Smart Valve Positioner



Dimension of the position sensor unit of the Smart Valve Positioner



Remote installation solution of the Smart Valve Positioner



ALP Series Remote Smart Valve Positioner / ALP3800RDFAn

ALP Series Remote Smart Valve Positioner is an anti-vibration smart valve positioner, specially designed for valves and actuators in a vibrating working environment. The remote solution installs the valve position sensor unit in the positioner separately on the top of the valve, and then transmits the sensing valve position signal to the remote control unit through the twisted pair cable. At working, the control unit of the smart positioner receives the 2 wire 4-20mA.DC input signal from DCS system, obtains the valve position control set value through A/D conversion, and the actual valve position signal obtained through the remote valve position sensor, both through the CPU calculating, controls the input and output pressure of the pneumatic actuator through pilot valve, and than drives the valve to the set position.

ORDERING and SPECIFICATIONS

Type of the positioner	<input type="checkbox"/> L: Linear: 0 ~ (10-100) mm
	<input checked="" type="checkbox"/> R: Rotary, 0 ~ (50°-90°)
Type of Acting	<input checked="" type="checkbox"/> D: Double Acting; <input type="checkbox"/> S: Single Acting
Feedback (4-20mA)	<input checked="" type="checkbox"/> F: Internal Position Transmitter
Hart protocol	<input type="checkbox"/> H: Hart Module (only for input)
Location of position sensor	<input type="checkbox"/> I: Integrated with control part
	<input checked="" type="checkbox"/> A: At ≤ 5 m away from the control part
Explosion Proof	<input checked="" type="checkbox"/> n: no explosion proof
	<input type="checkbox"/> d: Flameproof

Technical Data

Input signal	4-20mA (2 wire), minimum 3.8mA
Operating voltage	9 ~ 36VDC
Supply pressure	0.14Mpa-0.7MPa (1.4 Bar - 7 Bar)
Output pressure	0.02Mpa-0.5MPa (0.2 Bar - 5 Bar)
Output characteristic	Linear
Air connection	1/4 (G, NPT)
Conduit	Input: 1/2 (G, NPT), Feedback: 1/2 G)
Explosion proof	Ex db II CT6 Gb, Ex tb IIIC T80° Db
Ambient temperature	-20°C ~ 60°C
Linearity	±1% (Single Acting); ±1.5% (Double Acting)
Hysteresis	±1% (Single Acting); ±1.5% (Double Acting)
Repeatability	0.4% (Single Acting); 0.8% (Double Acting)
Material	Aluminum alloy with polyester powder coated
Weight / Weather proof	3.15Kg+1.5Kg / IP65